



City of Cortland
25 Court Street
Cortland, NY, 13045
607-753-0872
www.Cortland.org

NOTICE of Changes to City of Cortland Parking Regulations and Renewed Enforcement.

As of October 10th, 2022, long term/residential parking will no longer be allowed on Haskell Place between West Court Street and Orchard Street. Parking on Haskell Place is restricted to three hours 8:00 a.m. to 9:00 p.m.

The following are the current regulations for all night parking in the City of Cortland

- A. The parking of vehicles is hereby prohibited on all highways or designated municipal parking lots within the corporate limits of this City between the hours of 2:00 a.m. and 6:00 a.m.:
- B. All-night parking is allowed in the following municipal parking lots designated by calendar day being either odd or even, time beginning at 12:01 a.m. to 8:00 a.m.:

Property Known As	Designated Parking
Clinton Avenue Parking Lot	Odd-night parking on the east side and even-night parking on the west side
Dexter Parking Lot	Odd nights: 5 spots on southwest corner; even nights: 5 spots on northwest corner
Groton Avenue Parking Lot	Odd-night parking on the west and south sides and even-night parking on the east side
Main Street Parking Lot	Odd-night parking on the north side and even-night parking on the south side
Tompkins Trust Parking Lot	Odd all-night parking on the north side only
Orchard Street Parking Lot	Even-night parking on the west side, a total of 11 spaces, and even-night parking on the east side along Rascals-Elks building line
Port Watson Street Parking Lot	Odd-night parking on the west side of the center parking area and even-night parking on the east side of the center parking area



City of Cortland
25 Court Street
Cortland, NY, 13045
607-753-0872
www.Cortland.org

Port Watson Youth Center Lot	Parking allowed on odd/even day scheme on alternate sides of two center rows only; time beginning 12:01 a.m. to 6:00 a.m. (42 spaces)
Williams Street Parking Lot	Odd-night parking on the north side and even-night parking on the south side

- C. Subsections A and B shall not apply to the parking of vehicles by physicians on professional call.

The parking or leaving standing of vehicles is hereby prohibited in any of the following designated public parking lots for a period of time in excess of the time period established for particular controlled parking zones:

(a) 23 Court Street (City Municipal Lot).

(b) 23 Groton Avenue (Groton Avenue Parking Lot): three-hour parking, 8:00 a.m. to 9:00 p.m.; alternate all-night parking, odd and even dates, 12:01 a.m. to 8:00 a.m.

(c) 20 Main Street (Orchard Street Parking Lot): three-hour parking, 8:00 a.m. to 9:00 p.m.; even-night parking, 12:01 a.m. to 8:00 a.m.

(d) 16 - 22 Port Watson Street (Port Watson Street Parking Lot): three-hour parking, 8:00 a.m. to 9:00 p.m.; alternate all-night parking, odd and even dates, 12:01 a.m. to 8:00 a.m.; two-hour parking in the first 12 spaces on the southernmost end of the parking lot, except designated handicapped parking spaces.

(e) 27 - 29 Clinton Avenue (Clinton Avenue Parking Lot): three-hour parking, 8:00 a.m. to 9:00 p.m.; alternate all-night parking, odd and even dates, 12:01 a.m. to 8:00 a.m.



City of Cortland
25 Court Street
Cortland, NY, 13045
607-753-0872
www.Cortland.org

(f) 143 - 145 Main Street (Main Street Parking Lot): three-hour parking, 8:00 a.m. to 9:00 p.m.; alternate all-night parking, odd and even dates, 12:01 a.m. to 8:00 a.m.

(g) Tompkins Trust Lot: three-hour parking, 8:00 a.m. to 9:00 p.m.

(h) Central Avenue Parking Lot: three-hour parking, 8:00 a.m. to 9:00 p.m.; alternate all-night parking, odd and even dates, 12:01 a.m. to 8:00 a.m.

(i) Williams Street Parking Lot: three-hour parking, 8:00 a.m. to 9:00 p.m.; alternate all-night parking, odd and even dates, 12:01 a.m. to 8:00 a.m.

(j) Port Watson Street (Port Watson Youth Center Lot): 6:01 a.m. to 12:00 midnight, open parking with no restriction; 12:01 a.m. to 6:00 a.m., alternate all-night parking, odd and even dates (two center rows only).

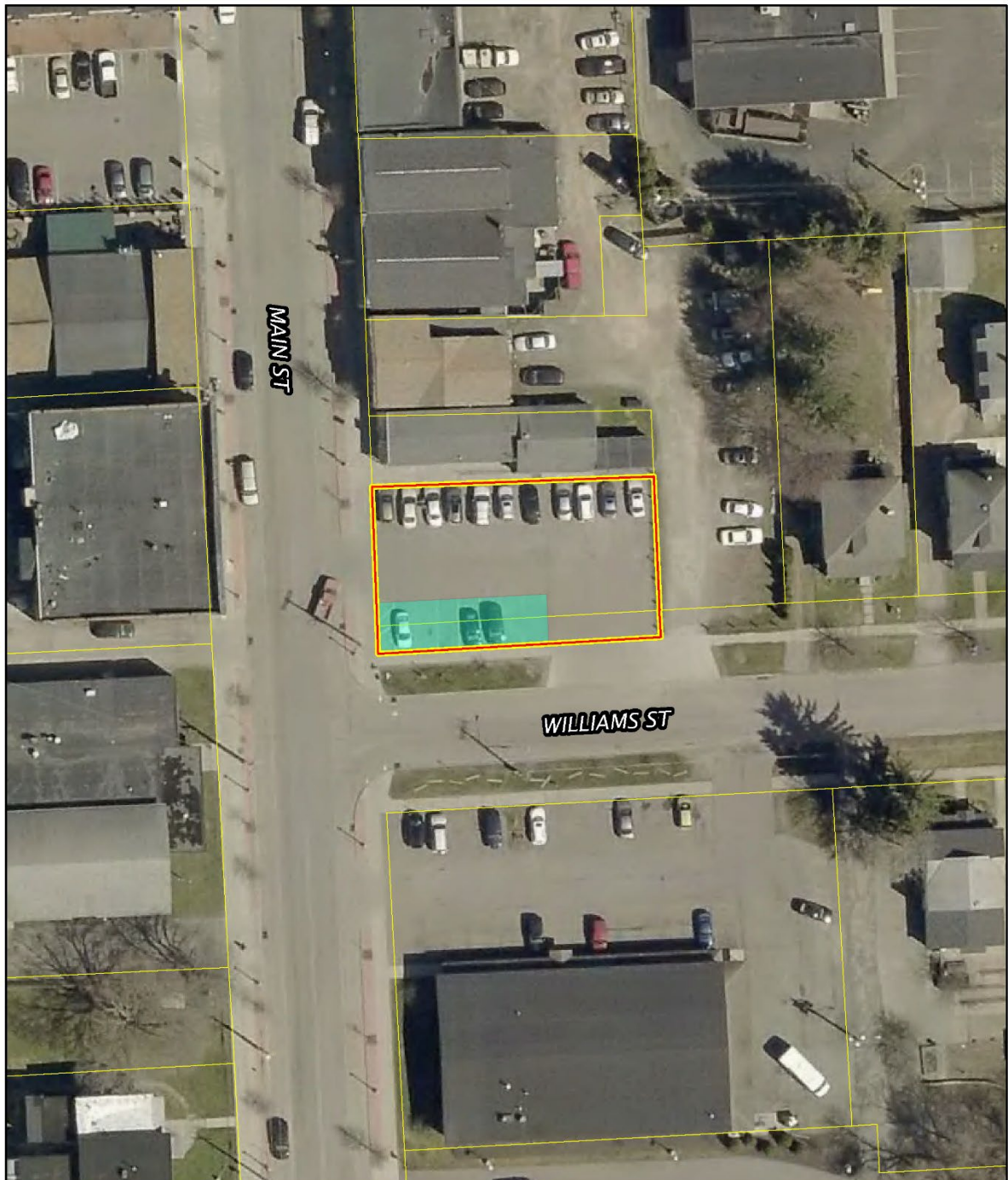
ODD/EVEN PARKING PERMITS: \$25.00 per month or at a discount of \$20.00 per month if six or more months are purchased at a time. This permit allows parking in any of the seven public parking lots all day and overnight, following the odd/even parking regulation. You must park in either an even or an odd parking spot based upon whether the following morning is odd or even. The odd/even rule only applies overnight, all cars must be moved by 8AM or risk citation

RESIDENT PARKING PERMITS \$30 per month. This permit only allows parking in areas designated for residential parking (see attached map). This permit does not allow overnight parking at the Odd/Even signs. Permit holders parking in non-designated areas risk citation.

**Parking Lot Located
on the Corner of
Williams and Main
Street.
Residential Parking
Spots Are Shaded**

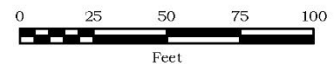


City of Cortland
25 Court Street
Cortland, NY, 13045
607-753-0872
www.Cortland.org



Cortland County
Planning Department
60 Central Avenue
Cortland, NY 13045

Williams Street
Parking Lot
City of Cortland



**Parking Lot Located
Next to Marketplace
Mall on Main Street**

**Residential Parking
Spots Are Shaded**

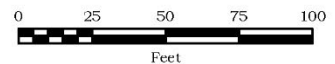


City of Cortland
25 Court Street
Cortland, NY, 13045
607-753-0872
www.Cortland.org



Cortland County
Planning Department
60 Central Avenue
Cortland, NY 13045

Main Street
Parking Lot
City of Cortland

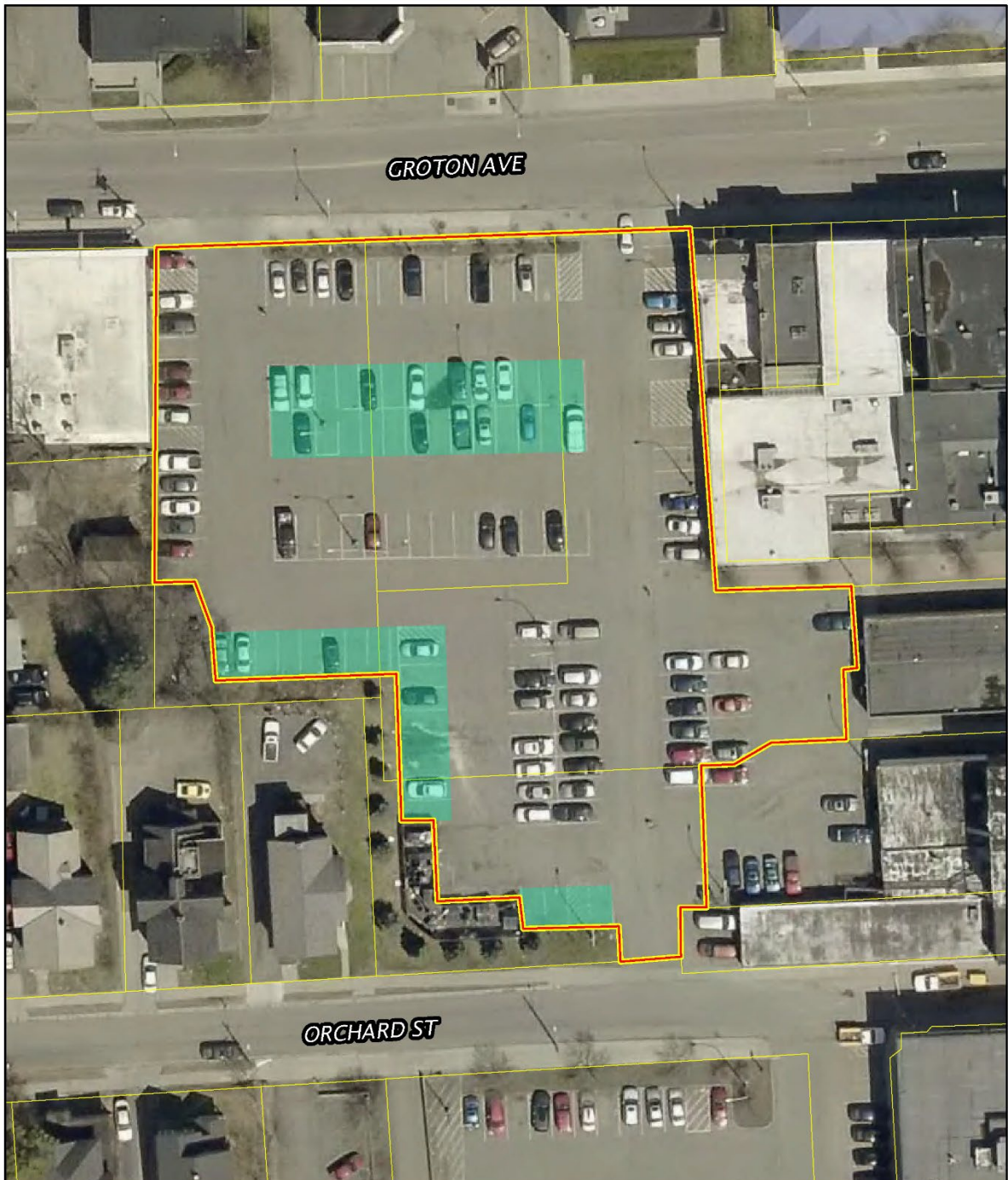


**Parking Lot Located
Between Groton Ave.
and Orchard Street**

**Residential Parking
Spots Are Shaded**



City of Cortland
25 Court Street
Cortland, NY, 13045
607-753-0872
www.Cortland.org



Cortland County
Planning Department
60 Central Avenue
Cortland, NY 13045

Groton Avenue
Parking Lot
City of Cortland

